

Shimane

YASUGI / MATSUE / IZUMO / IWAMI / OKI

Discount Information for International Visitors

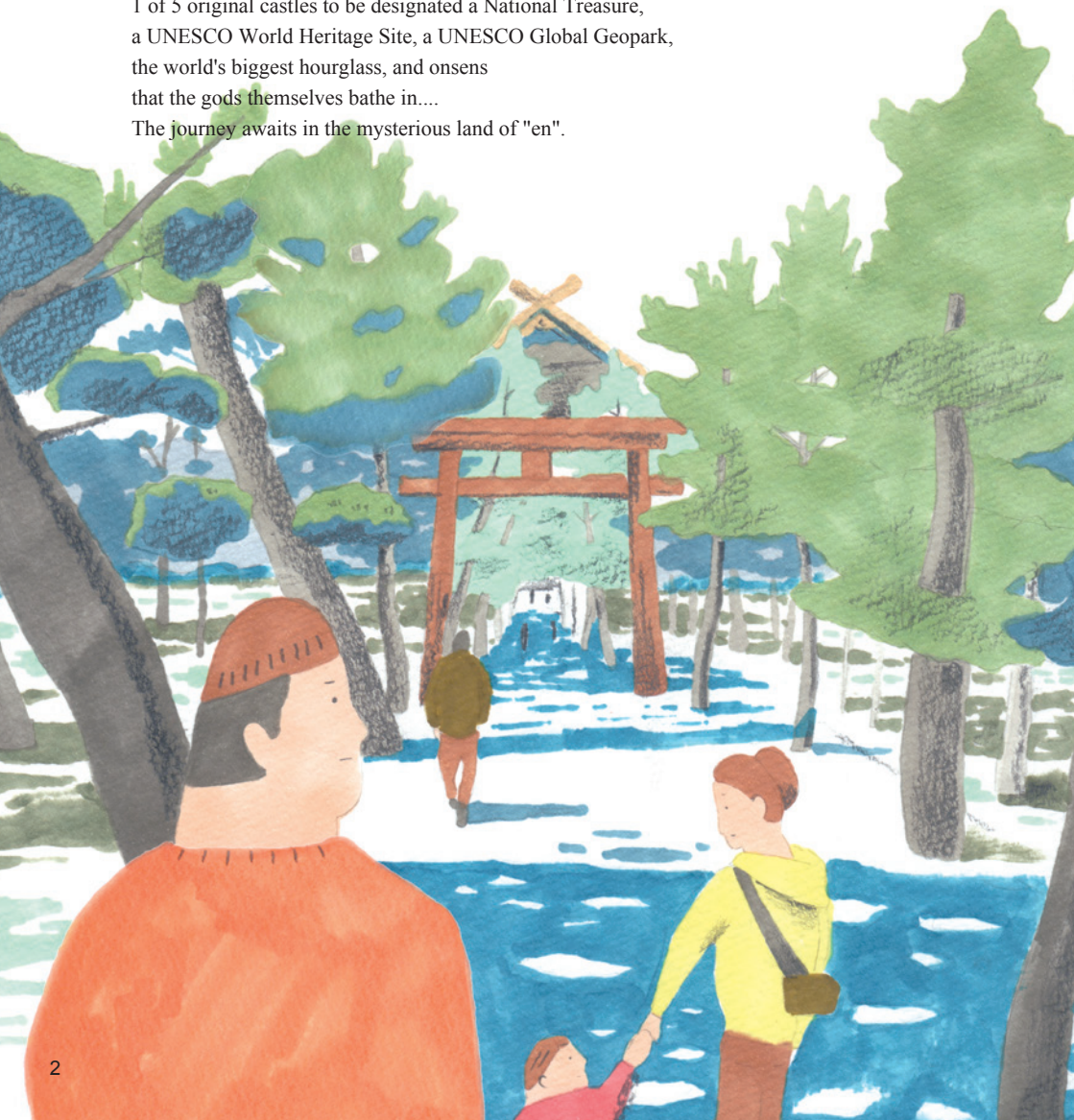


YŌKOSO SHIMANE!

Take the unbeaten path to an adventure in the unfamiliar Japan. Shimane is an area shrouded in mystery and mythology with deep roots in history and tradition.

Explore the Japanese garden that sits at #1 in all of Japan, one of the most ancient Shinto shrines in Japan, 1 of 5 original castles to be designated a National Treasure, a UNESCO World Heritage Site, a UNESCO Global Geopark, the world's biggest hourglass, and onsens that the gods themselves bathe in....

The journey awaits in the mysterious land of "en".



Spring

Walk under 800 Sakura trees that line the Hii River in Unnan. Visit Yuushien Garden and check out 30,000 peonies floating on the surface of the pond. Watch a parade of dressed up samurai, including the founders of Matsue Castle, in the "Matsue Musha Gyoretsu".



Summer

Have an island adventure at Oki Islands. Hike a ridgeline, take a swim at a beach, and watch the sun set over Candle Island. Visit the gardens of Adachi Museum of Art that have been ranked No. 1 in all of Japan since 2003. Watch 10,000 fireworks launch over Lake Shinji for the Suigosai fireworks festival.



Fall

Visit Izumo Taisha Grand Shrine during "Kamiarizuki" (The Month of the Gods) and pray to the myriad gods that are visiting. Ride on the Horikawa Sightseeing Boat tour around Matsue Castle's moats lit up with handmade lanterns. Watch the fiery performances of Iwami Kagura at local shrines in Iwami.



Winter

Eat fresh snow crab at a one month long temporary Crab Shack called Kanigoya in Matsue. Dip in the waters of Tamatsukuri Onsen and pray for beautiful skin. Ski and snowboard at some of the best spots in the region on the mountain ridge that separates Shimane and Hiroshima. Take a stroll with the penguins through Matsue Vogel Park's illuminated gardens.

SHIMANE MAP & DISCOUNTED ADMISSION FEE (FOR FOREIGNERS)

Please present valid Passport/Residence Card upon entry at ticket office for discount.

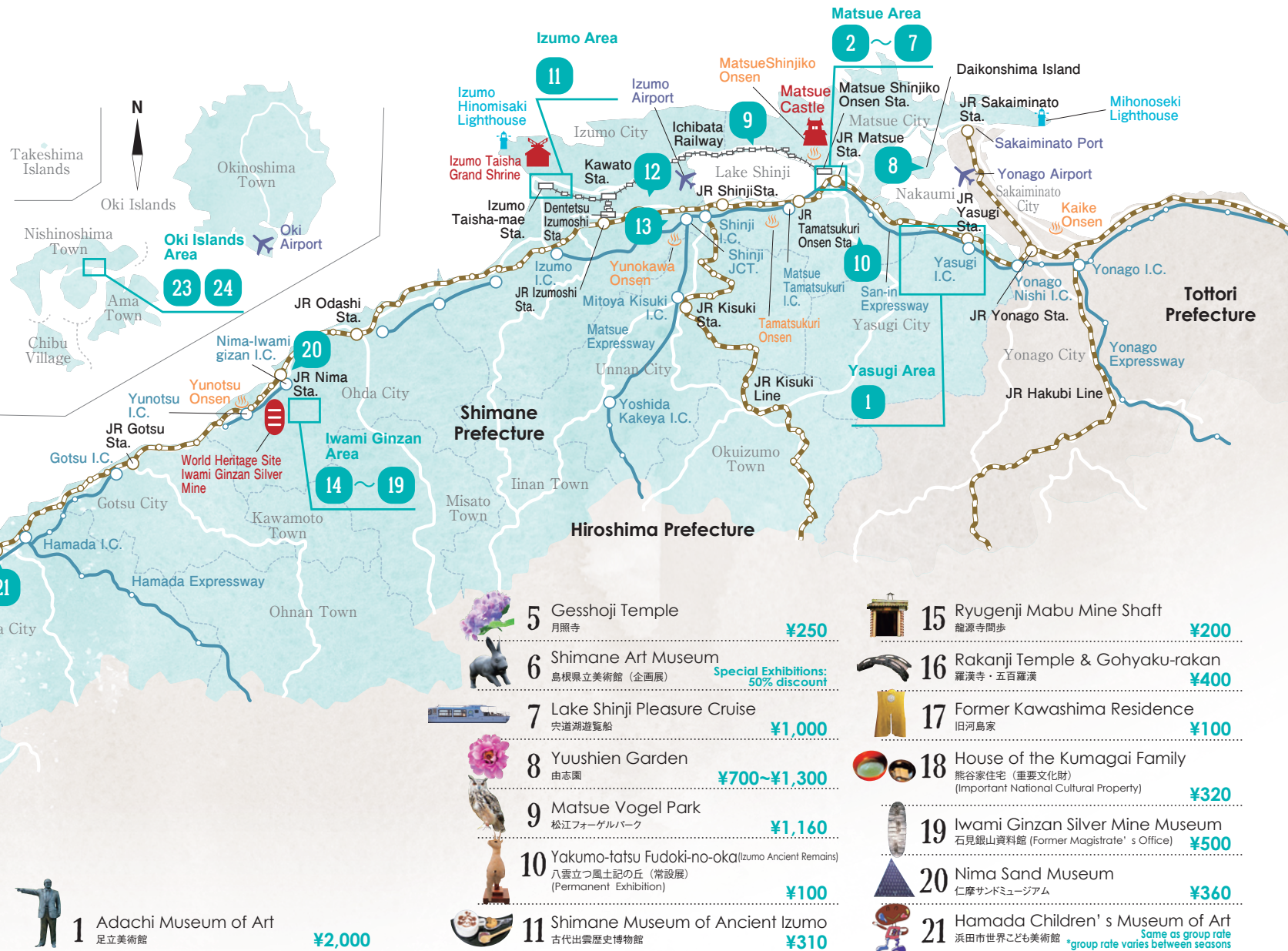
*As for discounts for international students and young children, please refer to each facility's page.

*Groups are admitted as individuals and are not eligible for additional discounts.

各施設の窓口で、現在有効なパスポートまたは在留カードを提示してください。外国籍のお客様に以下の施設で割引いたします。

*学生・子ども料金については、各施設のページをご覧ください。

*団体の場合も個人と同額の料金となります。



- 1 Adachi Museum of Art
足立美術館 ¥2,000
- 2 Horikawa Sightseeing Boat
堀川遊覧船 ¥1,200
- 3 Matsue History Museum
松江歴史館 ¥350
- 4 Matsue Horan-enya Memorial Hall
松江ホーランエンヤ伝承館 ¥140

- 5 Gesshoji Temple
月照寺 ¥250
- 6 Shimane Art Museum
島根県立美術館 (企画展) Special Exhibitions: 50% discount
- 7 Lake Shinji Pleasure Cruise
宍道湖遊覧船 ¥1,000
- 8 Yuushien Garden
由志園 ¥700~¥1,300
- 9 Matsue Vogel Park
松江フォーゲルパーク ¥1,160
- 10 Yakumo-tatsu Fudoki-no-oka (Izumo Ancient Remains)
八雲立つ風土記の丘 (常設展示) (Permanent Exhibition) ¥100
- 11 Shimane Museum of Ancient Izumo
古代出雲歴史博物館 ¥310
- 12 The Izumo Museum of Quilt Art
出雲キルト美術館 ¥600
- 13 Archaeological Museum of Kojindani
荒神谷博物館 ¥102
- 14 Iwami Ginzan World Heritage Center
石見銀山世界遺産センター ¥200

- 15 Ryugenji Mabu Mine Shaft
龍源寺開歩 ¥200
- 16 Rakanji Temple & Gohyaku-rakan
羅漢寺・五百羅漢 ¥400
- 17 Former Kawashima Residence
旧河島家 ¥100
- 18 House of the Kumagai Family
熊谷家住宅 (重要文化財) (Important National Cultural Property) ¥320
- 19 Iwami Ginzan Silver Mine Museum
石見銀山資料館 (Former Magistrate's Office) ¥500
- 20 Nima Sand Museum
仁摩サンドミュージアム ¥360
- 21 Hamada Children's Museum of Art
浜田市世界こども美術館 *group rate varies between seasons Same as group rate
- 22 Iwami Art Museum (Special Exhibition)
島根県立石見美術館 (企画展) ¥500~¥650
- 23 Nishinoshima Furusato-kan
西ノ島ふるさと館 ¥150
- 24 Kuroki-gosho Imperial Residence Site & Hekifu-kan Museum
黒木御所・碧風館 ¥150

- ICON
- Address
 - TEL
 - HP & Languages
 - Hours
 - Holiday
 - Souvenir shop
 - Restaurant
 - Café
 - Credit Card(s) accepted
 - Free Wi-Fi
 - Foreign language speaking staff
 - Brochures in foreign languages



Yasugi 安来

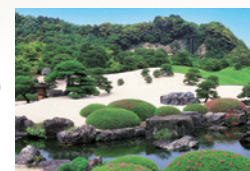
Experience the local traditional culture

Nestled between Matsue and the border of Tottori prefecture is Yasugi. It is most commonly known as the home of Adachi Museum of Art and its gardens that claim #1 on the list of Japanese gardens, but there is also much more to experience than just gardens. Some things to try include traditional indigo dyeing at Hirose Kasuri Center, Buddhist monk food (no meat or fish) at Kiyomizu-dera Temple, and the humorous "dojo-sukui" dance at Yasugibushi Performance Hall.



1 Adachi Museum of Art 足立美術館

Conveying the harmonized beauty of Japanese paintings and Japanese Gardens is the aim and wish of Adachi Museum of Art, which is best known for having one of the greatest collections of modern to contemporary Japanese arts. Such works of art include numerous masterpieces by the great Japanese painter Yokoyama Taikan, ceramics and 165,000 square-metre Japanese gardens. This museum is listed as a three-star site in the "Michelin Green Guide Japan" while Adachi's spectacular and immaculately maintained Japanese-style gardens have been ranked at No.1 since 2003 by the US magazine "Journal of Japanese Gardening". You can appreciate the splendid beauty of their gardens which show a different appearance as time / days / months / seasons change.



Discounted Admission

Adults: ¥2,000

University Students: ¥1,800

High School Students: ¥1,000

Elementary/Junior High

School Students: ¥500

Access

Free Shuttle: 20min from JR Yasugi Sta.

10min from Yasugi I.C. on San-in EXPWY. (P)400 cars

EN / KR / 簡 / 繁 / FR

VISA / MasterCard / JCB / AMEX / Diners / Discover / UnionPay(銀聯)

320, Furukawacho, Yasugi City ☎ 0854-28-7111

HP <https://www.adachi-museum.or.jp/en> (EN)

☎ [Apr. - Sep.] 9am - 5:30pm

[Oct. - Mar.] 9am - 5pm

📅 Open 7 days a week

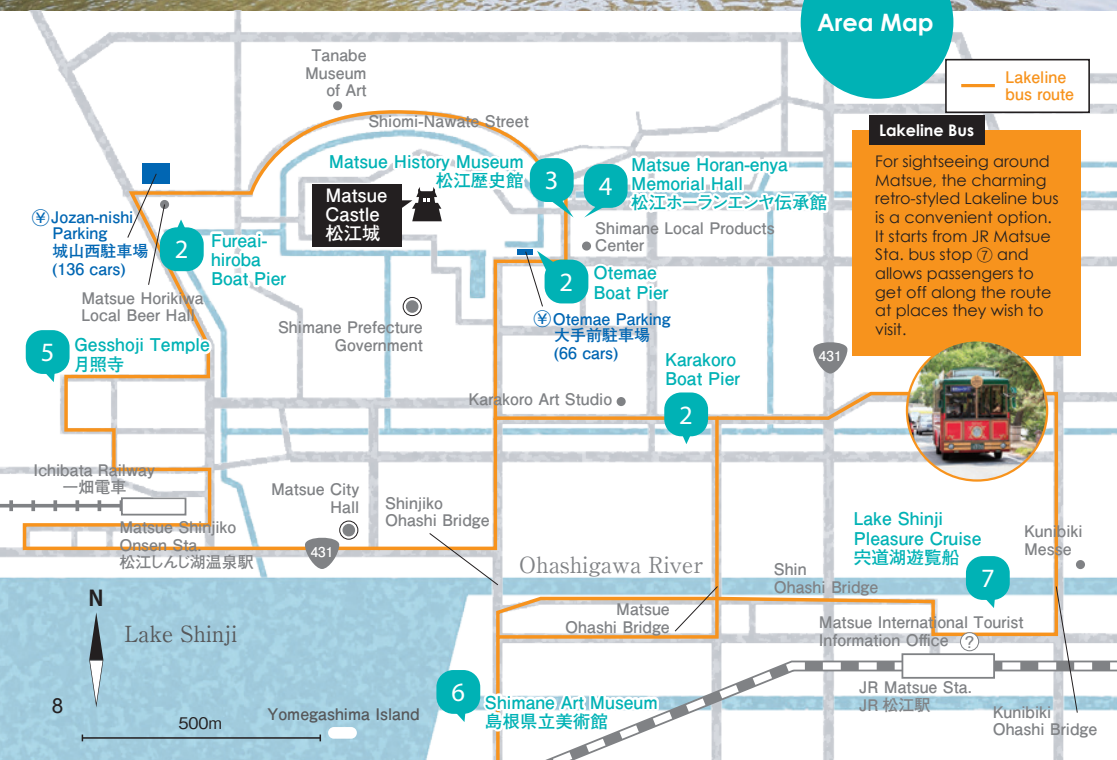
The Annex closes once every few months to change exhibits.

Enjoy the castle town in the city of water

Matsue 松江

Squeezed between two lakes, the Sea of Japan and a mountain ridgeline, lies the capital of Shimane. Blessed with a natural hot spring, Tamatsukuri Onsen is one of the oldest hot spring areas in Japan and claims to be where the gods themselves go to bathe. Lake Shinji contains seven delicacies with the most popular being shijimi clams which are said to be good for the skin. Matsue has deep roots in tea ceremony culture and you can drink green tea at Meimei-an which overlooks Matsue Castle or experience "wagashi" making at Karakoro Art Studio.

Area Map



2 Horikawa Sightseeing Boat

堀川遊覧船

This small passenger boat will take you through the history, nature and people of Matsue. The moats surrounding Matsue Castle (National Treasure) remain unchanged from when it was first constructed over 400 years ago. This 50 min sightseeing boat guides you along the moats through the historical Japanese townscape of the castle town Matsue, the places related to Lafcadio Hearn, forests which have been there 400 years since the construction of the castle, charming changes of seasons and the beauty of moats itself.

**Discounted Admission**

*1 day pass

Adults: ¥1,200

Elementary School Students: ¥600

Access**Fureai-hiroba Boat Pier:**

17min via Matsue Lakeline Bus from JR Matsue Sta. to 'Horikawa Sightseeing Boat Pier' bus stop.

② Jozan-nishi Car Parking.

Otemae Boat Pier:

13min via Matsue Lakeline Bus from JR Matsue Sta. to 'Otemae Horikawa Sightseeing Boat Pier' bus stop.

② Otemae Car Parking.

Karakoro Boat Pier:

10min via Matsue Lakeline Bus from JR Matsue Sta. to 'Kyo-bashi' bus stop.

📶 (at Fureai&Otemae Pier) 📶 (at Fureai&Otemae Pier)

📶 EN / KR / 簡 / 繁

📶 VISA / MasterCard / JCB / AMEX / UnionPay(銀聯)



📍 507-1 Kurodacho, Matsue City ☎ 0852-27-0417

🌐 <http://www.matsue-horikawameguri.jp/language/en/index.html> (EN / KR / 簡)

🕒 Departure time

[Jul.1 - Aug.15] 9am - 6pm

[Mar.1 - Jun. 30, Aug.16 - Oct. 10] 9am - 5pm

[Oct.11 - end of Feb.] 9am - 4pm

🕒 Operates 7 days a week (Operation may be cancelled/changed due to bad weather.)



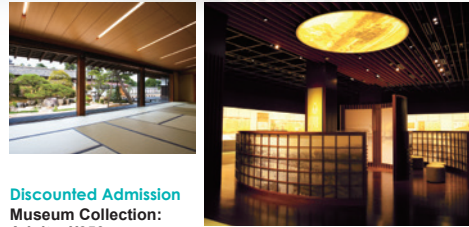


3 Matsue History Museum

松江歴史館



Designed to resemble a samurai residence, the museum features an in-depth view of the history and culture of the castle town Matsue over its 400 year history. As a museum with national treasures, one of its collections contain the talismans (also designated as a National Treasure), showing the completion year of Matsue Castle's construction. There is a Japanese style café inside the museum that provides a view of the Japanese garden and visitors can enjoy the tastes of green tea with original wagashi confectionaries. Foreign language audio-guides are available for free in English/Mandarin Chinese/Korean.



Discounted Admission
Museum Collection:
Adults: ¥350

Elementary/Junior High School Students: ¥170
Special Exhibitions: *rates vary according to exhibition

Access
13min via Matsue Lakeline Bus from JR Matsue Sta. to 'Otemae Horikawa Sightseeing Boat Pier' bus stop. Then walk 3min.

Located just east of Matsue Castle. 30min (2km) from JR Matsue Sta.

3min walk from Otemae Car Parking.

WiFi
VISA / MasterCard / JCB
Alipay / UnionPay(銀聯)

279 Tonomachi, Matsue City 0852-32-1607

HP <https://matsu-reki.jp/en/> (EN)

9am - 5pm

Closed every Mon. (or Tue. if Mon. is a holiday), New Year Holidays

4 Matsue Horan-enya Memorial Hall

松江ホーランエンヤ伝承館



In 2019, a procession of a hundred luxuriously decorated boats filled with performers dressed in colorful costumes sang and danced as they sailed through Matsue. This local festival is called Horan-enya, a Shinto ritual with 370 years of history and one of the three largest boat festivals in Japan. This festival is a rare sight because it is only held once every 10 years. This museum was built to keep this significant tradition alive and teach people about this rarely occurring festival. It provides information on the origin and history of Horan-enya while including exhibits of the colorful costumes and boats with pictures and videos of the past events. If you have the pocket curator app on your phone you can view the descriptions in many other languages. A must visit for people planning on attending the next Horan-enya in 2029!

250, Tonomachi, Matsue City 0852-32-1607

HP <http://matsu-reki.jp/en/horanenya.html> (EN)

9am - 5pm

Closed every Mon. (or Tue. if Mon. is a holiday), New Year Holidays



Discounted Admission

Adults: ¥140

Elementary/Junior High School Students: ¥70

Access

13min via Matsue Lakeline bus from JR Matsue Sta. to 'Otemae Horikawa Sightseeing Boat Pier' bus stop. Then walk 3min.

Located just east of Matsue Castle. 30min(2.3km) from JR Matsue Sta.

3min walk from Otemae Car Parking

WiFi



Discounted Admission

Adults: ¥250

Junior High/High School

Students: ¥250

Elementary School Students:

¥250

Access

20min via Matsue Lakeline bus from JR Matsue Sta. to 'Gesshoji Temple' bus stop.

40min (3.5km) from JR Matsue Sta.

30 cars

EN



5 Gesshoji Temple

月照寺



Gesshoji Temple, the 'Temple of Moonlight', is the family temple of the Matsudaira clan, the feudal lords of the Matsue domain during the Edo period. Inside the temple precincts, being designated a national historical site, are many relics and artifacts such as 'Karamon' (Chinese-style gate), a large turtle sculpture featured in the writings of Lafcadio Hearn and a tea room that was used by Matsudaira Fumai himself. Gesshoji temple is popular among people as the temple of history and faith. During mid-June to mid-July, beautiful hydrangeas bloom inside the temple. Many people come to enjoy the flowers in the quiet serene historical atmosphere.

179, Sotonakabaracho, Matsue City 0852-21-6056

HP <https://www.gesshoji-matsue.com/> (JP)

[Apr.-May.Jul.-Mar.] 10am - 4pm [Jun.] 8:30am - 5:30pm

Open 7 days a week *Closed occasionally due to bad weather.

6 Shimane Art Museum

島根県立美術館

Located on the shore of Lake Shinji, this museum's main concept is harmony with water. Many of their collections are related to water and the Museum Collection changes about 40 times a year. The splendid sunset seen from this museum is selected as one of the 100 most beautiful sunsets in Japan. They remain open 30 min. after sunset time during Mar. to Sep. so that visitors can enjoy and admire the marvellous view to their heart's content.

1-5, Sodeshicho, Matsue City 0852-55-4700

HP <https://www.shimane-art-museum.jp/> (EN / KR / 簡)

[Mar. - Sep.] 10am - vary *30min after sunset time

[Oct. - Feb.] 10am - 6:30pm

(Last admission to the art galleries is 30min before closing time)

Closed every Tue.(Wed.if Tue.is a holiday), New Year Holidays

Discounted Admission

Special Exhibitions:

50% discount

*rates vary according to exhibition

*discount applicable to Museum Collection only if purchased with a Special Exhibition ticket

Access

6min via Matsue City Bus Southern Inside Loop from Bus Stop ① at JR Matsue Sta. to 'Kenritsu Bijutsukan-mae' bus stop.

15min via Matsue Lakeline Bus from Ichibata Railway Matsue Shinjiko Onsen Sta. to 'Kenritsu Bijutsukan-mae' bus stop.

15min from JR Matsue Sta.

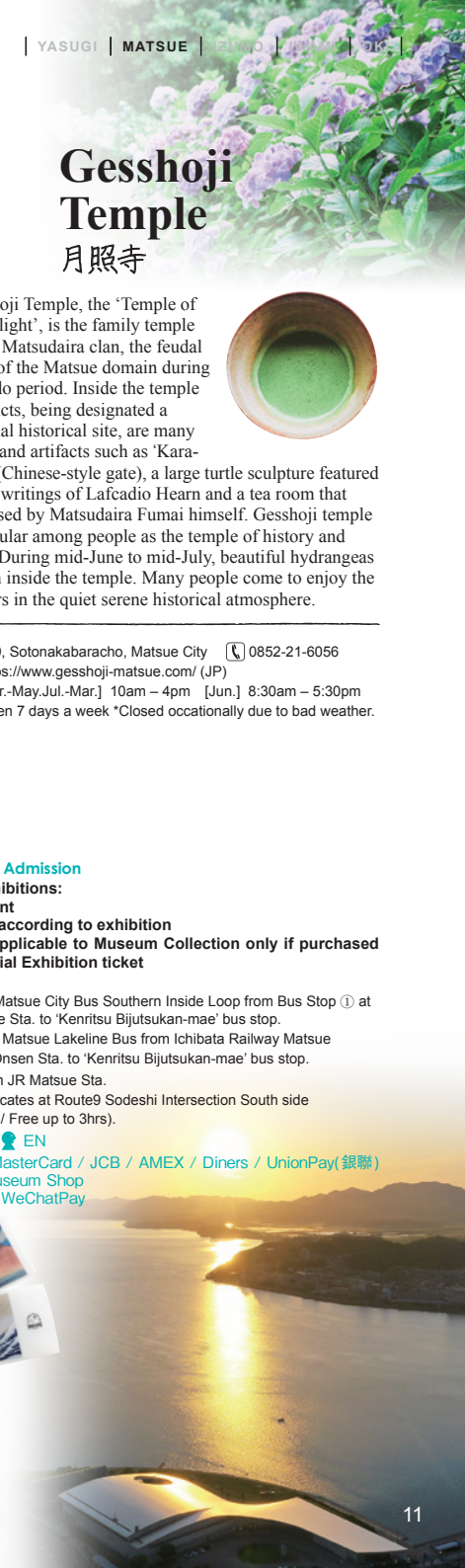
Parking locates at Route9 Sodeshi Intersection South side (230 cars / Free up to 3hrs).

WiFi

VISA / MasterCard / JCB / AMEX / Diners / UnionPay(銀聯)

*Only at Museum Shop

Alipay / WeChatPay





7 Lake Shinji Pleasure Cruise 宍道湖遊覧船

Leisurely watch the grand sunset over beautiful Lake Shinji and have the magnificent view all to yourself. The boat takes you on a one-hour pleasure tour around Lake Shinji from Ohashi River. Passengers can appreciate the mystic scenery of morning Lake Shinji on the refreshing Socho Fresh Cruising. Sunset Cruise is particularly popular which offers the opportunity to watch a beautiful sunset over Lake Shinji – the sunset is listed as one of the top 100 sunsets in Japan. Why don't you come and enjoy amazing cruise in the water city of Matsue? Beer, soft drinks and coffee are available on board.



Discounted Admission
Adults: ¥1,000
Elementary School Students:
¥500

Access

(Boarding Point 1)

15min from JR Matsue Sta.

Available

(Boarding Point 2)

5min from JR Matsue Sta.
Get off at 'Lake Shinji Pleasure
Cruise Pier' via Matsue
Lakeline bus



8 Yuushien Garden 由志園



Yuushien, a 'miniature garden of Izumo', featuring landscapes and mythology of Izumo area, is a traditional Japanese-styled walk-through garden around ponds. It is located in the centre of Daikonshima Island. Visitors can enjoy prominent peony flowers which can be viewed all year round as well as the many colours of the various seasonal flowers. Daikonshima is globally renowned as a growing area for Korean ginseng. You can also try a free-tasting of ginseng tea at the ginseng office that was restored from the Edo period. Come and experience the long cultural history of Daikonshima.

Japanese Peony and Korean Ginseng Village

1260-2, Hanyu, Yatsuka-cho, Matsue City
0852-76-2255
<https://www.yuushien.com/>
(JP)

10am - 5pm (Last admission
at 4:30pm)

*Hours change during spring
& autumn events.

Closed on Dec. 30 ~ Dec. 31



Discounted Admission
Adults: ¥700~
¥1,300
Elementary/Junior
High/High School
Students: ¥300~
¥600

*ticket price depends on the events

Access

20min from JR Matsue Sta. / 35min from JR Yonago Sta. /
12min from Nishio IC. on San-in EXPWY. 300 cars

EN / KR / 簡 / 繁
VISA / MasterCard / UnionPay (銀聯)



10 Yakumo-tatsu Fudoki-no-oka (Izumo Ancient Remains) 八雲立つ風土記の丘

The area around Fudoki-no-oka was the centre of ancient Izumo. There are a lot of cultural assets such as ancient tombs, old shrines and temples, related to ancient Izumo including the Izumo-kokubunji Memorial and Izumo Provincial Office Memorial. The Exhibition and Learning Hall has many materials including 'Mikaeri-no-shika' (deer clay figure / Important Cultural Property), a historically valuable sword inscribed 'Nukatabe-no-omi' made in 6th century and a detailed diorama of this area in 8th century. Free bicycles are available to explore around historic remains in this area.

456, Obacho, Matsue City 0852-23-2485
<https://www.yakumotatu-fudokinooka.jp/en/> (EN / KR / 簡)
9am - 5pm (Last admission at 4:30pm)
Closed every Tue. (or Wed. if Tue. is a holiday), Dec. 29 ~ Jan. 3



Discounted Admission
Adults: ¥1,160
Elementary/Junior High School
Students: ¥580

Access

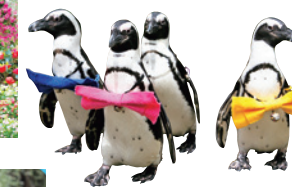
45 minutes from Izumo Taisha-mae
Station, 15 minutes from Matsue
Shinjiko Onsen Station (get off at
Matsue Vogel Park Station, which is
directly in front of the facility)

40 minutes from Izumo Taisha, 25 minutes from Izumo Airport, 30
minutes from Tamatsukuri Onsen, 20 minutes from Matsue Castle 25
minutes from JR Matsue Station

EN / KR / 簡 / 繁

VISA / MasterCard / JCB / AMEX / Diners / UnionPay (銀聯)

9 Matsue Vogel Park 松江フォーゲルパーク



A paradise of birds and
flowers along a beautiful
lakeside of Lake Shinji,
Matsue Vogel Park
offers great fun whether
rain or shine with its
walking course around
the park completely
covered by a roof. They

have one of the largest flower
greenhouses in Japan.
Inside the greenhouse, focusing on begonia and fuchsia,
about 10,000 flowers are in full bloom all year round. In
the bird section, visitors can encounter 400 birds of 90
species such as rare owls, adorable cute penguins and
other bright and colourful tropical birds.

52, Ogakicho, Matsue City 0852-88-9800
<https://www.ichibata.co.jp/vogelpark/lang/en.html> (EN)
[Apr. - Sep.] 9am - 5:30pm (Last admission at 4:45pm)
[Oct. - Mar.] 9am - 5pm (Last admission at 4:15pm)
Open 7 days a week



Discounted Admission
Permanent Exhibition:
Adults: ¥100

Access

18min via Ichibata Bus (bound for Yakumo) from JR Matsue Sta. bus
stop ④ to 'Fudoki-no-oka Iriguchi' bus stop.
18min via Matsue City Bus (bound for Kambe-no-sato) from JR
Matsue Sta. bus stop ④ to 'Fudoki-no-oka Iriguchi' bus stop.

15min from JR Matsue Sta. 40 cars

EN

Izumo 出雲

The myriad of gods and the land of "en"

The land of the gods and their meeting place every 10th month of the lunar calendar. Popularly known for Izumo Taisha Grand Shrine where the god of "en" (the ties that bind us together) is enshrined. A local delicacy which also happens to be one of the three major varieties of soba is Izumo soba, which is traditionally eaten in a three-tier lunch box style. Climb to the top of the oldest stone masonry lighthouse in Japan which sits overlooking the Sea of Japan.



Area Map



Property of the Agency of Cultural Affairs,
Donated by Shimane Museum of Ancient Izumo.

Discounted Admission

Permanent Exhibition:

Adults: ¥310

University Students: ¥200

Elementary/Junior High/High School Students: ¥100

Special Exhibitions: 50% discount.

***rates vary according to exhibition**

Access

25min via Ichibata Bus (bound for Izumo Taisha Grand Shrine/
Hinomisaki) from Bus Stop No.1 at JR Izumoshi Sta. to "Seimon-mae"
bus stop. Then walk 2min.

7min walk from Ichibata Railway Izumo Taisha-mae Sta.

244 cars

EN / KR / 簡 / 繁 / FR EN

VISA / MasterCard / JCB / AMEX / Diners / Discover /
UnionPay(銀聯)

11 Shimane Museum of Ancient Izumo 古代出雲歴史博物館



Located next to Izumo Taisha Grand Shrine, this museum introduces the history and culture of ancient Izumo and Izumo Taisha Grand Shrine. The collection includes the largest amount of ancient bronze swords and bronze bell-shaped vessels (National Treasures) which were excavated in tremendous scales from two sites in Izumo. It also houses the Uzubashira Pillar, a huge pillar found in the ruins of the Izumo Taisha Grand Shrine, and a 1/10 scale model of the main hall of ancient Izumo Taisha Grand Shrine that was said to be as high as 48m.

99-4, Kizukihigashi, Taisha-cho, Izumo City

0853-53-8600

<https://www.izm.ed.jp/english/> (EN / KR / 簡 / 繁)

[Mar. - Oct.] 9am - 6pm (Last admission at 5:30pm)
[Nov. - Feb.] 9am - 5pm (Last admission at 4:30pm)

Closed every 3rd Tue. of the month (may change depending
on the exhibition schedule)

Closed every 1st and 3rd Wednesday from 10/1/2023 -
3/1/2024

*dates may change without notice



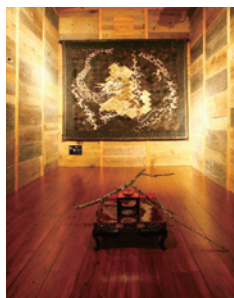
Discounted Admission
**Adults: ¥600 / Elementary/
 Junior High/High School**
Students: ¥500
Access

➡ 20min from JR Izumoshi Sta.
 10min from JR Naoe Sta.
 7min from Izumo Airport.

🚗 15 cars

📶 EN

💳 VISA / MasterCard / JCB
 / AMEX



12 The Izumo Museum of Quilt Art

出雲キルト美術館

Situated in the middle of Izumo Plain filled with rich nature, the Izumo Museum of Quilt Art opened its door as the first quilt museum in Japan. The museum is set in a 200-year-old Japanese traditional house constructed of Izumo style. Quilt works produced by Mutsuko Yawatagaki who is a leading expert on Japanese style quilting are displayed alongside 'ikebana' (flower arrangements), seasonal room decorations and the four seasonal themed exhibitions per year. Passing down the culture of Izumo and the Japanese spirit to the next generation is the main concept of this museum through its space, atmosphere and aesthetic beauty of the setting of the museum.

📍 330, Fukutomi, Hikawa-cho, Izumo City 📞 0853-72-7146
 🌐 <http://www.yawatagaki.com/index2.html>
 🕒 10am - 5pm
 🗓 Closed every Wed. and 3rd Sun. of the month (open on holidays)

13 Archaeological Museum of Kojindani

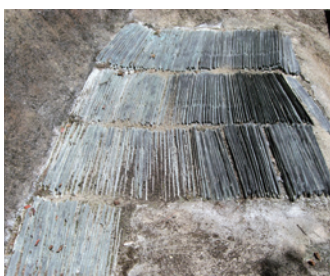
荒神谷博物館

In July of 1984, 358 bronze swords were excavated at the Kojindani Site. The number of swords found in one site exceeds the total number of bronze swords excavated nationwide to date. In the following year, bronze bell-shaped vessels and spearheads were also excavated from the site, making a huge impact on the history of ancient times. (These bronze implements are designated as a National Treasure.) It can be said that this museum is a great compilation of the results of surveys and research at the mysterious Kojindani site.

📍 873-8, Kanba, Hikawa-cho, Izumo City
 📞 0853-72-9044
 🌐 <http://www.kojindani.jp/> (JP)
 🕒 9am - 5pm (Last admission at 4:30pm)
 🗓 Closed every Tue.
 (Wed. if Tue. is a holiday),
 Dec. 29 ~ Jan. 3

Discounted Admission
Permanent Exhibition: Adults: ¥102
Special Exhibitions: rates vary according to exhibition
Access

➡ 20min from JR Izumoshi Sta..
 2min from Hikawa IC on San-in EXPWY.
 5min from JR Shobara Sta.
 🚗 North Parking (64 cars) or South Parking (126 cars)
 📶 EN



The Iwami region lies in the west of Shimane, stretching from the mountains to the sea with an abundance of nature and deep roots in tradition. To the west is a town called Tsuwano, or "little Kyoto", where 'Koi Carp' filled canals and white plastered walls remain from its old castle town days. Visit the 400-year old Iwami Ginzan Silver Mine, globally known for producing high quality Japanese silver which made up 1/3 of the world's silver supply, and the town that was built around it which includes the therapeutic waters of Yunotsu Onsen; both are registered as UNESCO World Heritage Sites.

Take a stroll through a region full of history and tradition

Iwami 石見

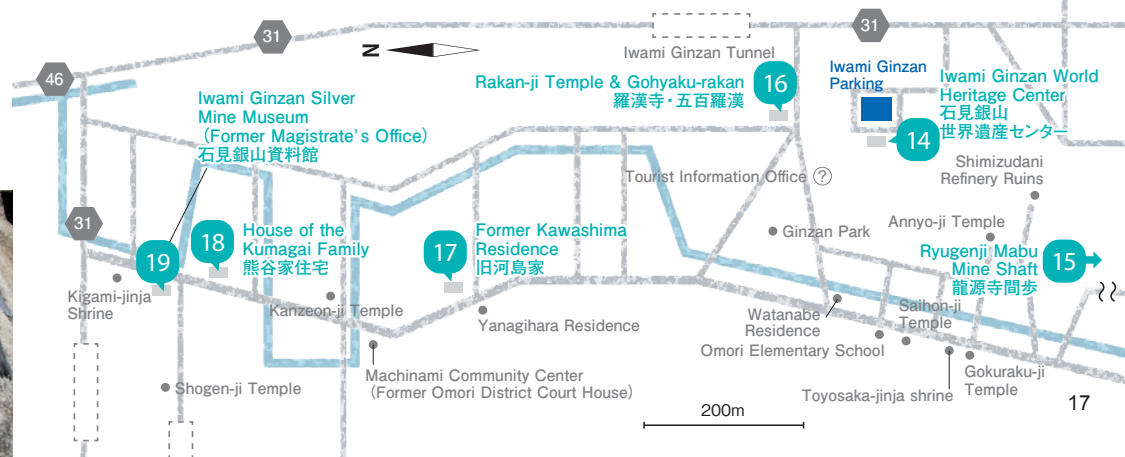
UNESCO World Heritage Site Iwami Ginzan Silver Mine and its Cultural Landscape

ユネスコ世界遺産 石見銀山遺跡とその文化的景観

Omori-Ginzan Important Preservation District for Groups of Historic Buildings
 大森銀山重要伝統的建造物群保存地区

Traffic restrictions regarding Iwami Ginzan:
 Visitors arriving by car are asked to please park at the Iwami Ginzan Parking. You can take the bus from the bus stop [Iwami Ginzan Parking Lot] in front of Iwami Ginzan World Heritage Center to the silver mine.

Area Map





14 Iwami Ginzan World Heritage Center

石見銀山世界遺産センター

Serving as the introductory entrance of Iwami Ginzan Silver Mine districts, this museum features exhibits and simple dioramas that clearly provide an overall perspective about Iwami Ginzan to the visitors. A fun short play by museum staff introducing the life of miner families in the Iwami Ginzan in the Edo period is held from time to time. Visitors can join workshop of making Chogin, one of the silver coins used during 16th to 19th century in Japan, using an alloy of tin and bismuth. (Reservation is required to join workshops)

Discounted Admission

Adults: ¥200
Elementary/Junior High/
High School Students: ¥100

Access

35min via local bus from
JR Odashi Sta. to 'Iwami
Ginzan World Heritage
Center' bus stop

90min from Izumo Airport via San-in EXPWY. ④400 cars

EN / KR / 簡 / 繁 / FR

VISA / MasterCard / JCB / UnionPay(銀聯)

Alipay / WeChatPay



1597-3, I, Omoricho, Ohda City ☎ 0854-89-0183

HP <https://ginzan.city.ohda.lg.jp/> (JP)

☎ [Mar. - Nov.] 8:30am - 6pm

*Exhibition Room: 9am - 5:30pm (Last admission at 5pm)

[Dec. - Feb.] 8:30am - 5:30pm

*Exhibition Room: 9am - 5pm (Last admission at 4:30pm)

☎ Closed last Tue. of the month, New Year Holidays



Discounted Admission

Adults: ¥400
Elementary/Junior High School Students: ¥200

Access

28min via local bus from JR Odashi Sta. to 'Omori' bus stop

16 Rakanji Temple & Gohyaku-rakan

羅漢寺・五百羅漢

This temple was founded in 1764 for the repose of the souls of the people who had worked at the Iwami Ginzan Silver Mine. There are caves across the river in front of the temple. Enshrined inside the caves carved into the rocky mountain are Buddhist statues with 500 hand-carved stone arhat figures that were made over the course of about 25 years. Each is engraved with different expression and it is said that you can surely find an arhat figure which looks similar to a lost loved one. Everything, the three stone bridges, small stream, etc., survives today unchanged.



804, I, Omoricho, Ohda City ☎ 0854-89-0005

HP <http://www.rakanji.jp/> (JP)

☎ 9am - 5pm (9am - 4:30pm in winter)

☎ Open 7 days a week *Closed occasionally

15 Ryugenji Mabu Mine Shaft

龍源寺間歩

During the middle of Edo period, silver was massively produced in the Iwami Ginzan Silver Mine. These mine shafts are known as 'mabu' and there are over 700 of them in various sizes in this area. Ryugenji Mabu was operated under the direct management of the magistrate's office. Visitors can walk inside of the tunnel and the rough chisel marks made by miners in the Edo period can still be seen clearly on the walls. We recommend taking a relaxing 40 min walk along the beautiful stream in the forest as you go between the mining shaft and Omori town.

183, Ni, Omoricho, Ohda City ☎ 0854-89-0347

HP https://www.city.oda.lg.jp/ohda_city/organization/23/596/15162/3672 (JP)

☎ [Mar. - Nov.] 9am - 5pm (Last admission at 4:50pm)

[Dec. - Feb.] 9am - 4pm (Last admission at 3:50pm)

☎ Closed on New Year's Day



Discounted Admission

Adults: ¥200
Elementary/Junior High School Students: ¥100

Access

30min by local bus from JR Odashi Sta. Get off at 'Omori' bus stop. Then walk 40min to the mine shaft through little village and the forest.

EN / KR / 簡 / 繁

VISA / MasterCard / UnionPay(銀聯)



17 Former Kawashima Residence

(Samurai House)

旧河島家

The Kawashima family, who had become a head of Iwami Ginzan Silver Mine officials, built this house in the beginning of 1800. The characteristics of a samurai residence such as placements and room arrangements are well preserved. It enables visitors to get a glimpse of the daily life of a samurai. Visitors can also enjoy the display of how things were stored and a recreated scene of dinner time for a samurai family.

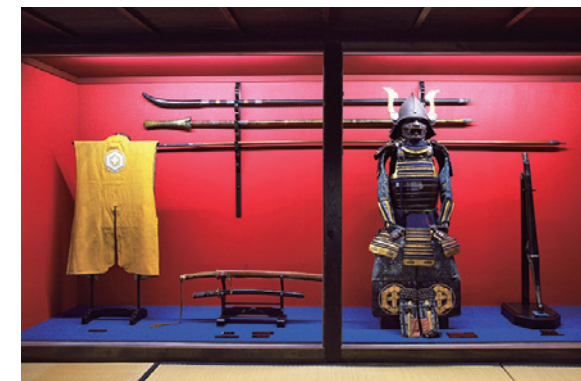


118-1, Ha, Omoricho, Ohda City ☎ 0854-89-0932

HP <http://kumagai.city.ohda.lg.jp/10.html> (JP)

☎ 9am - 4:30pm

☎ Closed every Tue. (or Wed. if Tue. is a holiday), Dec. 29 ~ Jan. 3, Closed occasionally



Discounted Admission

Adults: ¥100
Elementary/Junior High
School Students: Free

Access

26min via local bus from
JR Odashi Sta. to 'Omori
Daikansho ato' bus stop.
Then walk 10min.

EN / 簡 / 繁

VISA / MasterCard / JCB / AMEX / Diners / Discover





Discounted Admission
Adults: ¥320
Elementary/Junior High School Students: Free
Access

26min via local bus from JR Odashi Sta. to 'Omori Daikansho ato' bus stop. Then walk 2min.

EN / 簡 / 繁
VISA / MasterCard / JCB / AMEX / Diners / Discover



Important National Cultural Property

18 House of the Kumagai Family

熊谷家住宅 (重要文化財)

The Kumagai family was the largest merchant in Omori. The family was involved in the management of the silver mine and became a purveyor under the Tokugawa government patronage. Running such finance businesses, sake breweries, and etc., they enjoyed prosperity, as the ruling merchant in the 19th century. It is worth seeing not only the historic architecture and historical associations with the Iwami Ginzan Silver Mine but also its furniture, garments and other household articles that change with each season. 'Kamado-no-hi' (Cooking Stove Day), a unique opportunity to experience the old Japanese lifestyle, is held every second Sunday of the month.

63, Ha, Omoricho, Ohda City ☎ 0854-89-9003
HP <http://kumagai.city.ohda.lg.jp/> (JP)
9:30am - 5pm
Closed every Tue. (or Wed. if Tue. is a holiday), Dec. 29 ~ Jan. 3, Closed occasionally

19 Iwami Ginzan Silver Mine Museum

(Former Magistrate's Office)
石見銀山資料館

The place was once the estate of Tokugawa Shogunate mine administrators. This museum houses many historical materials ranging from the valuable materials of Iwami Ginzan Silver Mine, mining and smelting tools which were actually used in the mine, materials representing life and worship of samurai and Tokugawa Shogunate mine administrators, to various ores from various mines across Japan. The current building was built in 1902 as the Nima District Office, but remains being used as a museum today.

51-1, Ha, Omoricho, Ohda City ☎ 0854-89-0846
HP <https://igmuseum.jp/> (EN / KR / 簡 / 繁)
9:30am - 5pm
Closed every Wed. (or Thurs. if Wed. is a holiday), Dec. 29 ~ Jan. 4



Discounted Admission
Adults: ¥500
Elementary/Junior High/High School Students: ¥250
Access

26min via local bus from JR Odashi Sta. to 'Omori Daikansho ato' bus stop.

*There are some explanations written in English & Simplified Chinese inside the museum.
VISA / MasterCard



Discounted Admission

Adults: ¥360
Elementary/Junior High School Students: ¥180
Access

10 min from JR Nima Sta.
50 min from Izumo IC. on San-in EXPWY. / 30min from Gotsu IC. on San-in EXPWY. (P)200 cars

EN / KR / 簡 / 繁
*Only at Fureai Koryu-kan VISA / MasterCard / JCB / AMEX

20 Nima Sand Museum

仁摩サンドミュージアム

'Sand', 'Time' and 'Environment' are the three main concepts of this sand museum. The museum, designed by Shin Takamatsu who is a world famous architect who was born and raised in the town of Nima, consists of six large and small pyramids. The magnificent hourglass set in the middle of the largest pyramid measures the duration of a year and has been recognized as the world's largest hourglass by the Guinness World Records in 2015. Visitors can enjoy participating in various glass workshops in the neighbouring Fureai Koryu-kan.

975, Amagouchi, Nima-cho, Ohda City ☎ 0854-88-3776
HP <http://www.sandmuseum.jp/> (JP / EN / KR / 簡 / 繁)
9am - 5pm (Last admission at 4:30pm)
Closed every Wed. (open if Wed. is a holiday), New Year Holidays



21 Hamada Children's Museum of Art

浜田市世界こども美術館

A hands-on museum for kids where visitors can enjoy experimenting with "seeing" and "creating" things. This museum holds many unique and special exhibitions oriented for kids. Striving to promote cultural exchange with other countries, this museum has collected many arts of kids all over the world. Various workshops where kids can express their ingenuity through creative activities are held every Saturday, Sunday and during public holidays. From within the museum you can enjoy the grand view of the Sea of Japan, as well as enjoy playing in the surrounding nature.

859-1 Nobaracho, Hamada City ☎ 0855-23-8451
HP <http://eng.hamada-kodomo-art.com/> (EN)

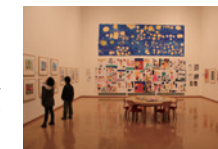
9:30am - 5pm (Last admission at 4:30pm)
Closed every Mon., the day after public holidays, New Year Holidays, and between exhibitions



Discounted Admission
Same as group rate *group rate varies between seasons
Access

10min via local bus (bound for 'Shimane Kenritsu Daigaku') from JR Hamada Sta. to 'Kodomo Bijutsukan-Mae' bus stop.

10 min from Hamada IC on Hamada EXPWY. (P)250 cars





22 Iwami Art Museum (Grand Toit)

島根県立石見美術館

The Shimane Arts Centre, 'Grand Toit' has beautiful architecture with its roofs and walls being decorated with 'sekishu-gawara' (traditional roof tiles of the Iwami region). There is a basin of 25 sq m in a 45 sq m courtyard surrounded by a glass corridor which is known as a place for visitors to relax. Iwami Art Museum, located in 'Grand Toit', has 4 exhibition rooms with permanent and seasonal special exhibitions.

Discounted Admission

Special Exhibition:

Adults: ¥500 ~ ¥650 *rates vary according to exhibition

University Students: ¥400

Elementary/Junior High/High School Students: ¥150

Access

5min via Iwami Kotsu Bus (bound for Ikou-ji) from JR Masuda Sta. to 'Grand Toit Mae' bus stop.

15min via Hagi-Iwami Airport Bus to JR Masuda Sta.

15min (1km) from JR Masuda Sta.

6km from Hagi-Iwami Airport.

50min (40km) from Hamada EXPWY, Hamada IC (P) 240 cars

90min via limited express train from JR Shin-Yamaguchi Sta. to JR Masuda Sta.

WiFi EN

VISA / MasterCard / JCB / AMEX / Diners / Discover / UnionPay (銀聯)

5-15, Ariakecho, Masuda City ☎ 0856-31-1860
HP <https://www.grandtoit.jp/english/index.html> (EN / KR / 簡)
🕒 9:30am - 6pm (Last admission to the galleries at 5:30pm)
📅 Closed every Tue. (Wed. if Tue. is a holiday), New Year Holidays



Yayoi KUSAMA pumpkin (1998)
Iwami Art Museum



Iwami Kagura 石見神楽

The western area of Shimane Prefecture is called the Iwami Region. In the evenings of the autumn festival season, traditional Kagura music echoes throughout the region from the shrines in the various towns. The people of Iwami love Kagura so much that the performers and musicians are all locals; there are even Kagura troupes for children.

The fast tempo, the dynamic movements, the vibrant and gorgeous costumes, and easy to follow stories are all characteristic to Iwami Kagura. The costumes and the masks are all hand-made one by one by local artisans. Join the locals and watch as the mythical world of Japanese mythology unfolds before your eyes.

Check here to learn more about Iwami Kagura!



Island Adventure! Oki 隠岐

In the Sea of Japan, 60km North of the Shimane peninsula is an archipelago of islands called the Oki Islands. Only four of the islands are inhabited, but all the islands are designated as a National Park and UNESCO Global Geopark. Take a day hiking through the forests and along the coastline that overlooks the sea, take a cruise boat around the island and see the famous spots, even take a kayak out to sea, or do none of it and just relax on the beach and enjoy the peaceful island life.

Area Map



5km

Oki Islands UNESCO
Global Geopark
隠岐ユネスコ世界ジオパーク

Daisen Oki National Park
大山隠岐国立公園

Dozen

Nishinoshima Town

Matengai Cliff
Kuniga Coast
Tsutenkyo Arch
Akao Lookout
Onimai Lookout

Beppu Port
Kuroki-gosho Imperial Residence Site & Hekifu-kan Museum
黒木御所跡・碧風館
Takuhi Shrine

23 Nishinoshima Furusato-kan
西ノ島ふるさと館
24 Uzuka-mikoto Shrine
Akiya Coast
Oki Shrine

Ama Town

Kurii Port
Chibu Village
Shimazushima Walking Trail

Mt. Akahage
Sekiheki (Red Cliff)

Okinoshima Town

Shirashima Lookout
Rosoku-jima (Candle Island)
Akasaki Wharf
Jodogaura Coast
Chichi-sugi Japanese Cedar
Saigo Port
Cape Saigo

Dango-no-taki Waterfalls
Yui Maenosu (Intertidal Shore Platform)

Oki Airport

Dogo

Oki Islands

23 Nishinoshima Furusato-kan 西ノ島ふるさと館

This exhibition hall contains information on the nature and lifestyle of the locals in Nishinoshima. Items such as fishing tools, folk art, and cultural items are on display in the museum. Also on display is the [Kimura Collection], by Kimura Yasunobu, which is highly regarded for its valuable documentation collected on the living creatures in the Oki area.

- 56-10 Beppu, Nishinoshima-cho, Oki-gun
- 08514-7-8877
- <https://nkk-oki.com/english/information/nishinoshima-furusatokan/> (EN)
- [Apr. - Nov.] 9am - 5pm
- Dec. 1 ~ Mar. 31



Discounted Admission
Adults: ¥150
Students: ¥100
Access
3min from Beppu port



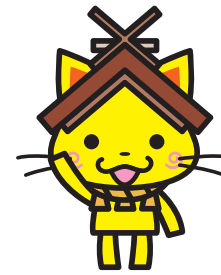
24 Kuroki-gosho Imperial Residence Site & Hekifu-kan Museum 黒木御所・碧風館

To the east of Beppu port, on top of a hill in the bay is where Emperor Godaigo stayed for a year when he was exiled in 1332. This historical landmark is representative of the island. On top of the hill is Kuroki Shrine which is a shrine dedicated to Emperor Godaigo and in 1958 it was designated by Shimane prefecture as a historical landmark. At the base of the hill is Hekifu-kan Museum which contains information on the Kuroki-gosho Imperial Residence Site.

- 273-3 Beppu, Nishinoshima-cho, Oki-gun
- 08514-7-8556
- [Apr. - Nov.] 9am - 5pm
- Dec. 1 ~ Mar. 31



Discounted Admission
Adults: ¥150
Students: ¥100
Access
10min from Beppu port

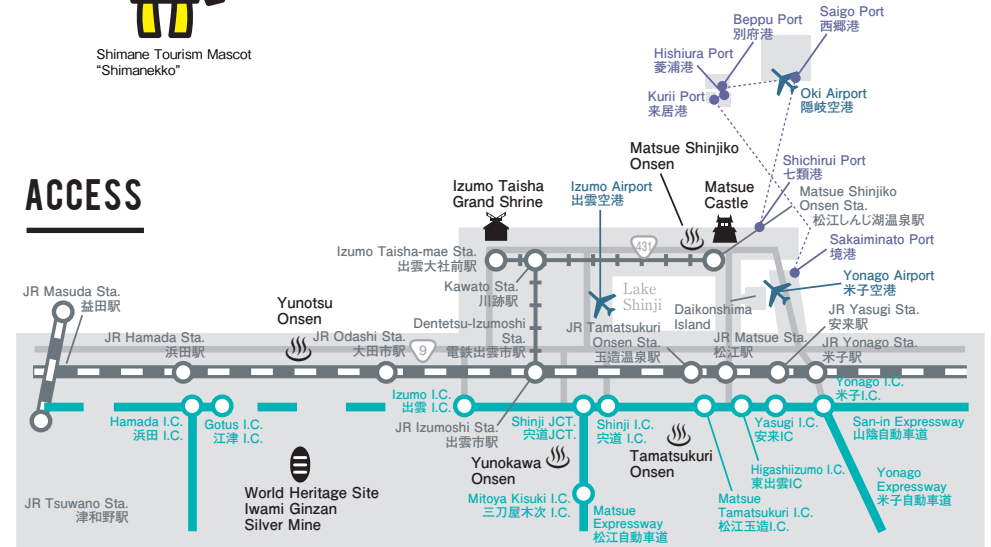


Shimane Tourism Mascot
"Shimaneeko"

We hope to see you soon
and dan-dan!

*dan-dan = "thank you" in the local dialect

ACCESS



[Matsue~Izumo Taisha Grand Shrine]

Ichibata Railway/1hr

[Matsue~Matsue Shinjiko Onsen]

3km/10min
Local Bus/15min

[Izumo Taisha Grand Shrine~Iwami Ginzan]

48km/70min
Via Ichibata Bus, JR & Iwami Kotsu Bus/90min

[JR]

Yasugi ⇄ Matsue ⇄ Izumo-shi ⇄ Odashi ⇄ Hamada ⇄ Masuda
15min 30min 30min 45min 35min

[Ichibata Electric Railway]

Matsue Shinjiko Onsen ⇄ Kawato ⇄ Izumo Taisha-mae
50min 10min

Matsue Shinjiko Onsen ⇄ Dentetsu-Izumoshi
60min

To Oki [Matsue~Oki]

Connecting Bus + Fast Ferry/2hr
Connecting Bus + Ferry/3hr~3.5hr

[Izumo~Oki]

Airplane/30min

[Dozen~Dogo]

Fast Ferry/approx. 30min
Ferry/approx. 70min



SHIMANE DRIVE
TIME MAP

Shimane

Discount Information for
International Visitors

Shimane International Tourism Association
(Shimane Prefectural Government)

1 Tonomachi, Matsue City, Shimane, 690-8501 JAPAN
Tel.0852-22-5579 / Fax.0852-22-5580

kanko-inbound@pref.shimane.lg.jp
<https://www.kankou-shimane.com/en/>

YouTube @Discover.Shimane Follow & Like us!